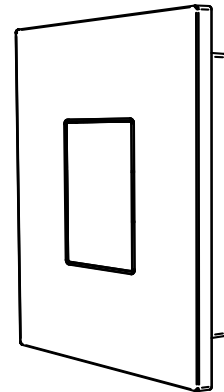


<b>Model No: ELEGANT_TX</b>
-----------------------------

## Elegant Wall Mount Transmitter



### Technical Specifications:

Models:	ELEGANT_TX
Encryption type:	Code hopping
Transmission frequency:	403MHz / 433MHz
Transmission method:	OOK
Transmission range:	150m (Open air) 40m (indoors)
Voltage range:	2.0V to 3.6 VDC
Battery type:	CR2032 Lithium
Sleep mode current consumption:	< = 1uA
Current consumption on TX:	< = 20mA
Operating Temperature:	-7°C to 49°C
Dimension (lxbxh)	60 x 60 x 25mm
Gross weight	55g
Release date:	July 2018

### Features:

Code-Hopping Encryption

Elegant modern design

3V Long Life Lithium battery

Frequency stability controlled +/- 75KHz

### Approvals:

This product is approved for use in Residential, commercial and Light Industrial Environment and Complies with the essential protection requirements of the R&TTE Directive 1999/EC on the approximation of the laws of the Member states relating to electromagnetic compatibility and radio spectrum.

Certifications:  
 ETSI EN300 220-V2.4.1  
 ETSI EN301-489-3 V1.4.1  
 ETSI EN301-489-1 V1.9.2  
 IEC 60950-1:2005 + A1:200  
 ICASA TA-2018/1011

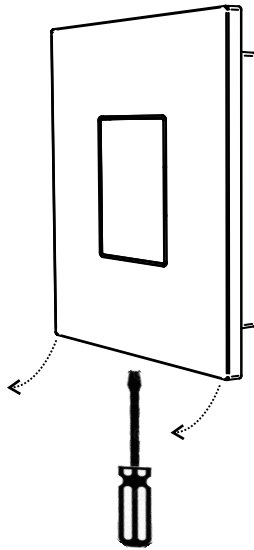


### Order Codes:

1 Ch Wall mount Transmitter (403MHz)	ELEGANT_TX
1 Ch Wall mount Transmitter (433MHz)	ELEGANT_TX_433
3V Lithium Battery CR2032	CR2032

## Replacing the Batteries

1. Unscrew the base plate
2. Remove the battery carefully pushing it out the battery holder towards the middle of the PCB
3. Install a new battery Positive (+) facing upwards.
4. Test the unit is operating before closing the housing the units LED light should come on when pressed



### CAUTION:

**RISK OF EXPLOSION IF THE BATTERY IS REPLACED BY AN INCORRECT TYPE. DISPOSE OF USED BATTERIES ACCORDING TO INSTRUCTIONS.**



The unit is supplied with a CR2032 3V Lithium battery. The battery is rated at 240mA/h. The unit will be able to transmit over 10 000 times before the battery is depleted. The unit will loose RF performance when the battery reaches below 2.6V DC. It is best to change the battery every 3 years if not used very often for instance if it is used as a PANIC button. If the unit is used as a Door opener in a busy office environment then we would recommend replacing the battery every year.

## Location & Mounting

Mount the unit in an upright position with the clip on the bottom. Avoid mounting on Metal surfaces and near High power cables. Not recommended to be mounted in wet environments or outdoors. For indoor use only.

## Programming a Receiver

Please follow the relevant receivers installation instructions to correctly program the unit to a receiver. The Elegant Transmitter is compatible to the following receiver models: Please check that the relevant frequencies match. We supply these products on two different frequencies namely: 403Mhz or 433MHz

403MHz Part codes:-

Model: RX1-150; Model: RX2-150; Model: Rx3-150; Model: RX1-500; Model: RX4-500; Model: Mb4000

433MHz Part codes:-

Model: RX1-150\_433; Model: RX2-150\_433; Model: Rx3-150\_433; Model: RX1-500\_433; Model: RX4-500\_433; Model: MB4000\_433

## Warranty

This product is sold subject to our standard warranty conditions and is warranted against defects in workmanship for a period of two years (batteries excluded)

**Customer Support line: +2711 462 5101 E-mail: [technical@sherlotronics.co.za](mailto:technical@sherlotronics.co.za)**